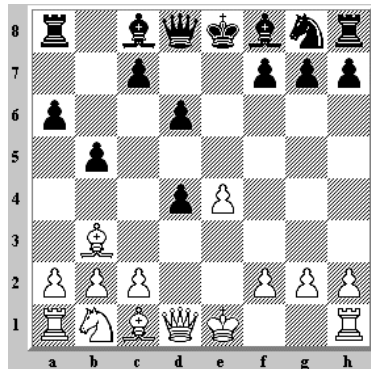


The SNS guide to
Opening Traps

1.e4 e5 2.Nf3 Nc6 3.Bb5 a6	1-5
1.e4 e5 2.Nf3 Nc6 3.Bb5 other	6-10
1.e4 e5 2.Nf3 Nc6 3.Bc4	11-15
1.e4 e5 2.Nf3 Nc6 3.other	16-17
1.e4 e5 2.Nf3 d6	18-20
1.e4 e5 2.f4	21-25
1.e4 e5 2.Nc3	26-30
1.e4 e5 2.other	31-33
1.e4 c5 2.Nf3	34-40
1.e4 c5 2.other	41-43
1.e4 c6	44-48
1.e4 d5	49-50
1.e4 e6	51-57
1.e4 Nf6	58-60
1.e4 other	61-62
1.d4	63-66
1.c4 e5	67-68
1.b4	69-70

No. 1

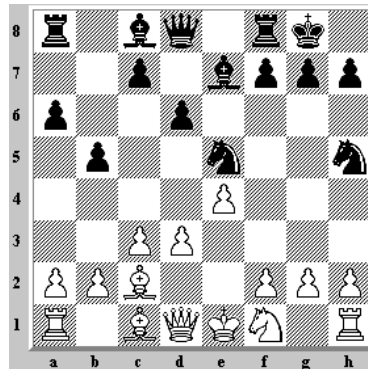


1.e4 e5 2.Nf3 Nc6 3.Bb5 a6 4.Ba4 d6
5.d4 b5 6.Bb3 Nxd4 7.Nxd4 exd4

White to move. Which is better?

- 8.Bd5
- 8.Qxd4

No. 2

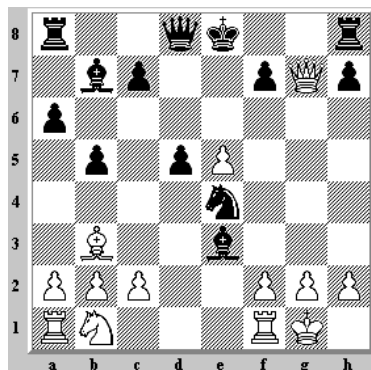


1.e4 e5 2.Nf3 Nc6 3.Bb5 a6 4.Ba4 Nf6
5.d3 d6 6.c3 Be7 7.Nbd2 O-O 8.Nf1 b5
9.Bc2 Nh5 and now 10.Nxe5 is dubious
because of 10...Nxe5

White to move. Which is better?

- 11.Qxh5
- 11.d4

No. 3

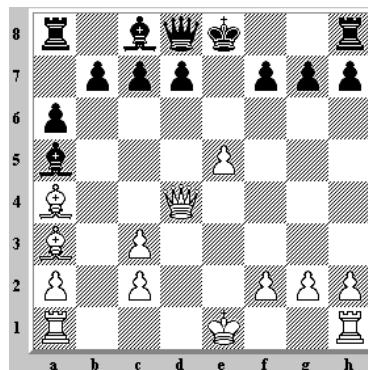


1.e4 e5 2.Nf3 Nc6 3.Bb5 a6 4.Ba4 Nf6
5.O-O Nxe4 6.d4 b5 7.Bb3 d5 8.Nxe5
Nxe5 9.dxe5 Bb7 10.Be3 Bc5 11.Qg4
Bxe3 12.Qxg7

Black to move. Which is better?

- 12...Bxf2+
- 12...Qg5

No. 4

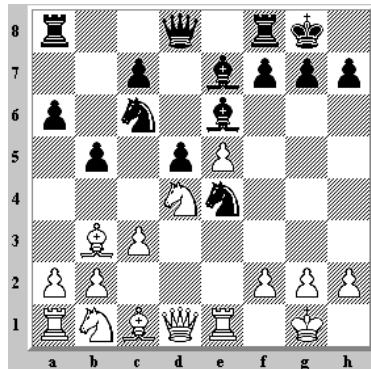


1.e4 e5 2.Nf3 Nc6 3.Bb5 a6 4.Ba4 Nf6
5.Nc3 Bc5 6.Nxe5 Nxe5 7.d4 Bb4 8.
dxe5 Nxe4 9.Qd4 Nxc3 10.bxc3 Ba5
11.Ba3

Black to move. Which is better?

- 11...Qg5
- 11...b6

No. 5

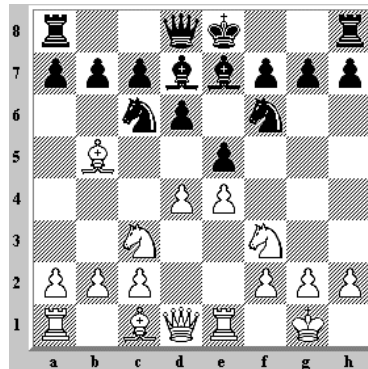


1.e4 e5 2.Nf3 Nc6 3.Bb5 a6 4.Ba4 Nf6
5.O-O Nxe4 6.d4 b5 7.Bb3 d5 8.dxe5
Be6 9.c3 Be7 10.Re1 O-O 11.Nd4

Black to move. Which is better?

- 11...Nxe5
- 11...Qd7

No. 6

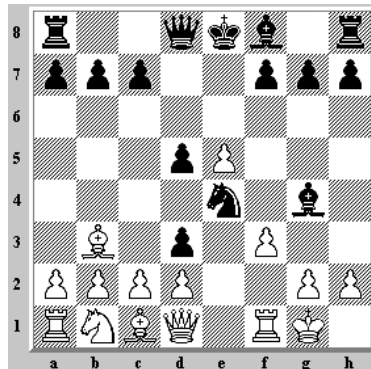


1.e4 e5 2.Nf3 Nc6 3.Bb5 d6 4.d4 Bd7
5.Nc3 Nf6 6.O-O Be7 7.Re1

Black to move. Which is better?

- 7...O-O
- 7...exd4

No. 7

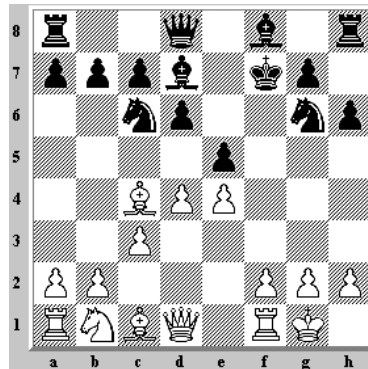


1.e4 e5 2.Nf3 Nc6 3.Bb5 Nd4 4.Nxd4
exd4 5.Bc4 (There is no need for this
retreat. 5...Nf6 is better) 5...Nf6 6.e5 d5
7.Bb3 Bg4 (Dubious, but it works here.
Better is 7...Ne4) 8.f3 Ne4 9.O-O d3

White to move. Which is better?

- 10.Qe1
- 10.fxc4

No. 8

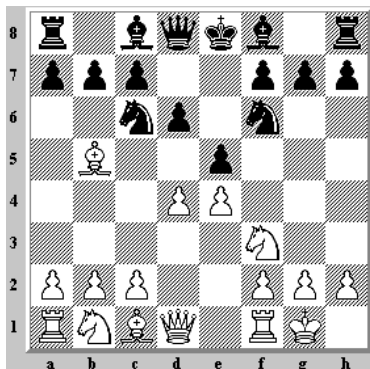


1.e4 e5 2.Nf3 Nc6 3.Bb5 Nge7 4.c3 d6
5.d4 Bd7 6.O-O Ng6 7.Ng5 h6 8.Nxf7
Kxf7 9.Bc4+

Black to move. Which is better?

- 9...Ke7
- 9...Ke8

No. 9

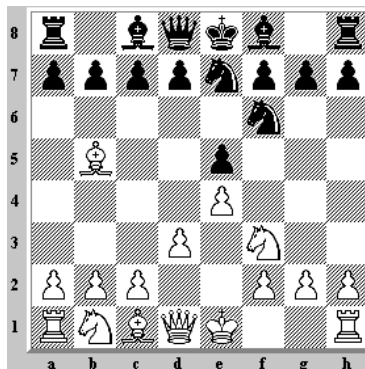


1.e4 e5 2.Nf3 Nc6 3.Bb5 Nf6 4.O-O d6
5.d4

Black to move. Which is better?

- 5...Bd7
- 5...Nxe4

No. 10

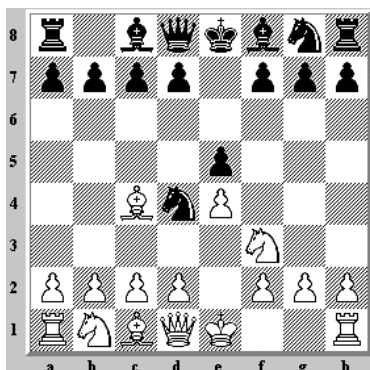


1.e4 e5 2.Nf3 Nc6 3.Bb5 Nf6 4.d3 Ne7

White to move. Which is better?

- 5.Nxe5
- 5.O-O

No. 11

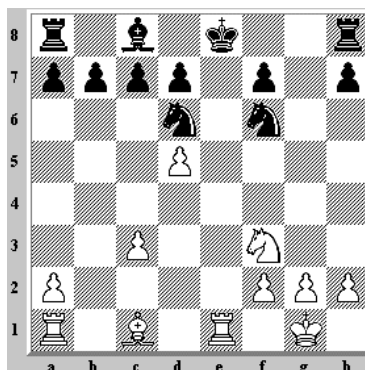


1.e4 e5 2.Nf3 Nc6 3.Bc4 Nd4

White to move. Which is better?

- 4.Nxd4
- 4.Nxe5

No. 12

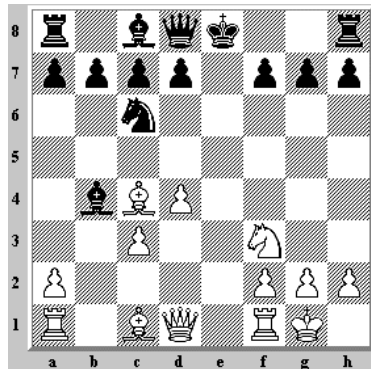


1.e4 e5 2.Nf3 Nc6 3.Bc4 Bc5 4.c3 Nf6
5.d4 exd4 6.cxd4 Bb4+ 7.Nc3 Nxe4
8. O-O Bxc3 9.d5 Ne5 10.bxc3 Nxc4
11.Qd4 Ncd6 (Better is 11...f5 12.Qxc4
d6) 12.Qxg7 Qf6 13.Qxf6 Nxf6 14.Re1+

Black to move. Which is better?

- 14...Kd8
- 14...Kf8

No. 13

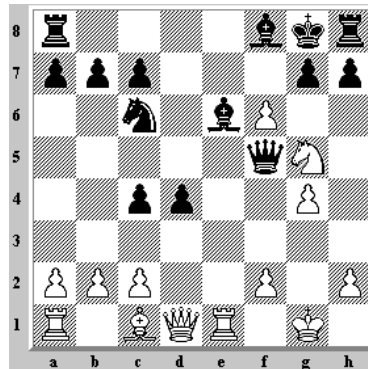


1.e4 e5 2.Nf3 Nc6 3.Bc4 Bc5 4.c3 Nf6
5.d4 exd4 6.cxd4 Bb4+ 7.Nc3 Nxe4 8.
O-O Nxc3 9.bxc3

Black to move. Which is better?

- 9...Bxc3
- 9...d5

No. 14

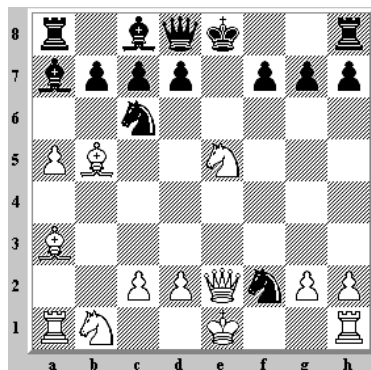


1.e4 e5 2.Nf3 Nc6 3.Bc4 Nf6 4.d4 exd4
5.O-O Bc5 6.e5 d5 7.exf6 dxc4 8.Re1+
Be6 9.Ng5 Qd5 10.Nc3 Qf5 11.Nce4 Bf8
12.Nxf7 Kxf7 13.Ng5+ Kg8 14.g4

Black to move. Which is better?

- 14...Qg6
- 14...Qxf6

No. 15

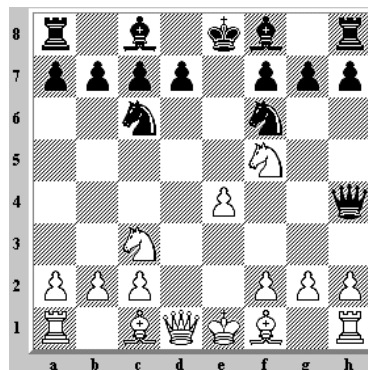


1.e4 e5 2.Nf3 Nc6 3.Bc4 Bc5 4.b4 Bb6
5.a4 a6 6.a5 Ba7 7.b5 axb5 8.Bxb5 Nf6
9.Ba3 Nxe4 10.Qe2 Nxf2 11.Nxe5

Black to move. Which is better?

- 11...Nd4
- 11...Ne7

No. 16

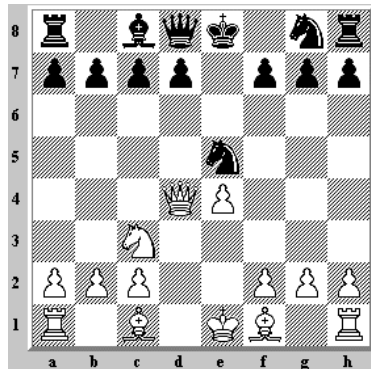


1.e4 e5 2.Nf3 Nc6 3.d4 exd4 4.Nxd4
Qh4 5.Nc3 (5.Nf3 Qxe4+ 6.Be2 Bb4+
7.c3 Bc5 8.O-O Nge7 9.Re1 d6 10.b4
Bb6 11.Nbd2 Qg6 12.Nc4 gives White
good compensation for the Pawn.)
5...Nf6 (5...Bb4 is better) 6.Nf5

Black to move. Which is better?

- 6...Qg4
- 6...Qh5

No. 17

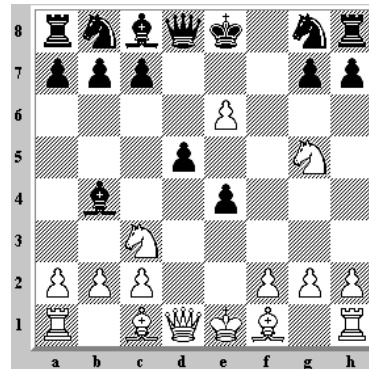


1.e4 e5 2.Nf3 Nc6 3.Nc3 Bc5 4.Nxe5
Nxe5 5.d4 Bxd4 (5... Bd6 is better)
6.Qxd4

Black to move. Which is better?

- 6...Qf6
- 6...d6

No. 18

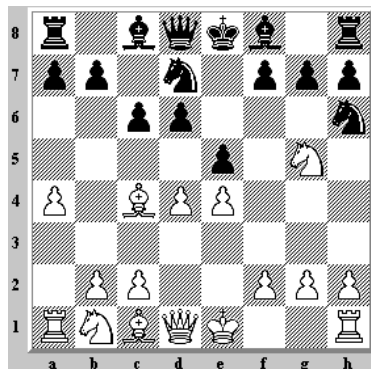


1.e4 e5 2.Nf3 d6 3.d4 f5 4.dxe5 fxe4
5.Ng5 d5 6.Nc3 Bb4 7.e6

Black to move. Which is better?

- 7...Bxc3+
- 7...Nh6

No. 19

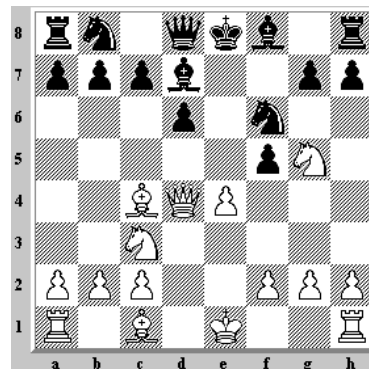


1.e4 e5 2.Nf3 d6 3.d4 Nd7 4.Bc4 c6
5.Ng5 Nh6 6.a4

Black to move. Which is better?

- 6...Be7
- 6...exd4

No. 20

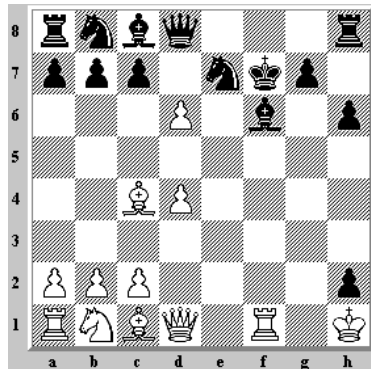


1.e4 e5 2.Nf3 d6 3.Bc4 f5 4.d4 Nf6
5.Nc3 exd4 6.Qxd4 Bd7 7.Ng5

Black to move. Which is better?

- 7...Nc6
- 7...Qe7

No. 21

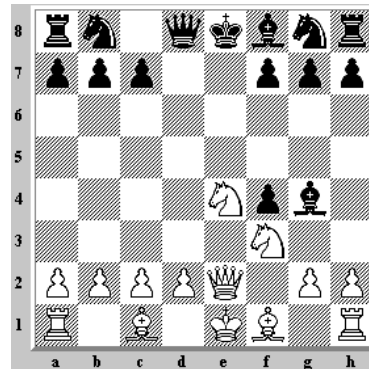


1.e4 e5 2.f4 exf4 3.Nf3 Be7 4.Bc4 Bh4+
5.g3 fxg3 6.O-O gxh2+ 7.Kh1 d5 8.exd5
Bf6 9.d4 Ne7 10.Ng5 h6 11.Nxf7 Kxf7
12.d6+

Black to move. Which is better?

- 12...Be6
- 12...Kf8

No. 22

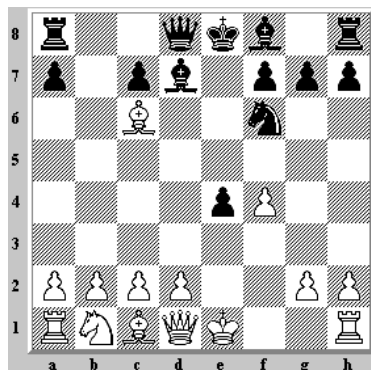


1.e4 e5 2.f4 exf4 3.Nf3 d5 4.Nc3 dxe4
5.Nxe4 Bg4 6.Qe2

Black to move. Which is better?

- 6...Bxf3
- 6...Qe7

No. 23

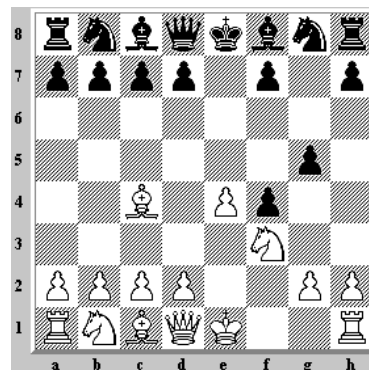


1.e4 e5 2.f4 d5 3.Nf3 dxe4 4.Nxe5 Nc6
5.Bb5 Nf6 6.Nxc6 bxc6 7.Bxc6+ Bd7

White to move. Which is better?

- 8.Bxa8
- 8.Bxd7+

No. 24

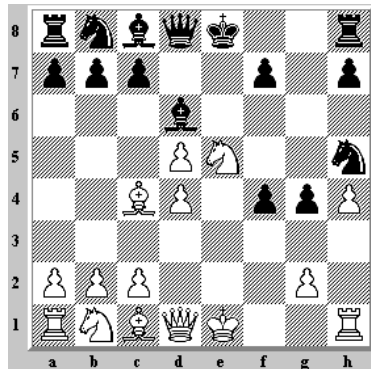


1.e4 e5 2.f4 exf4 3.Nf3 g5 4.Bc4

Black to move. Which is better?

- 4...Bg7
- 4...f6

No. 25

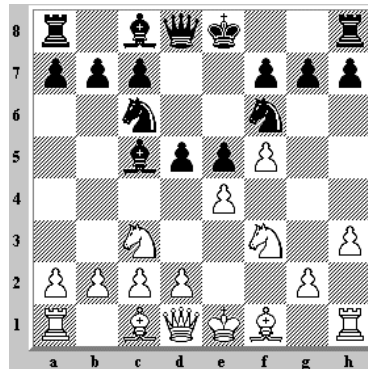


1.e4 e5 2.f4 exf4 3.Nf3 g5 4.h4 g4 5.Ne5 Nf6 6.Bc4 d5 7.exd5 Bd6 8.d4 Nh5

White to move. Which is better?

- 9.Nxg4
- 9.O-O

No. 26

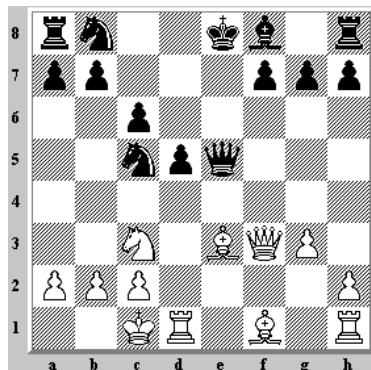


1.e4 e5 2.Nc3 Nc6 3.f4 Bc5 4.Nf3 d6 5.f5 Nf6 6.h3 d5

White to move. Which is better?

- 7.Bd3
- 7.Nxe5

No. 27

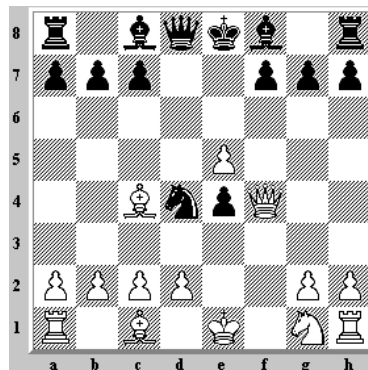


1.e4 e5 2.Nc3 Nf6 3.f4 d5 4.fxe5 Nxe4 5.Nf3 Bg4 6.Qe2 Nc5 7.d4 Bxf3 8.Qxf3 Qh4+ 9.g3 Qxd4 10.Be3 Qxe5 11.O-O-O c6

White to move. Which is better?

- 12.Bb5
- 12.Nxd5

No. 28

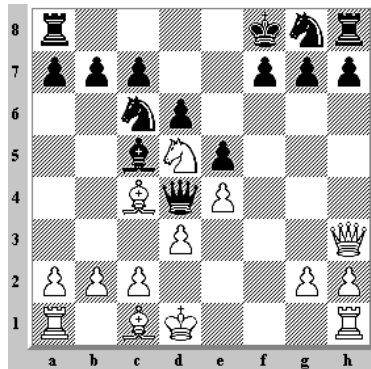


1.e4 e5 2.Nc3 Nf6 3.f4 d5 4.fxe5 Nxe4 5.Qf3 Nc6 6.Nxe4 Nd4 7.Qf4 dxe4 8.Bc4

Black to move. Which is better?

- 8...Be6
- 8...Bf5

No. 29

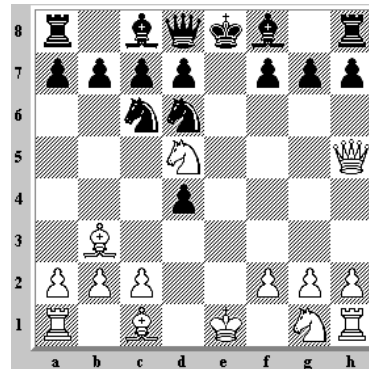


1.e4 e5 2.Nc3 Nc6 3.Bc4 Bc5 4.Qg4 Qf6
5.Nd5 Qxf2+ 6.Kd1 Kf8 7.Nh3 Qd4
8.d3 d6 9.Qh4 Bxh3 10.Qxh3

Black to move. Which is better?

- 10...Na5
- 10...Qf2

No. 30

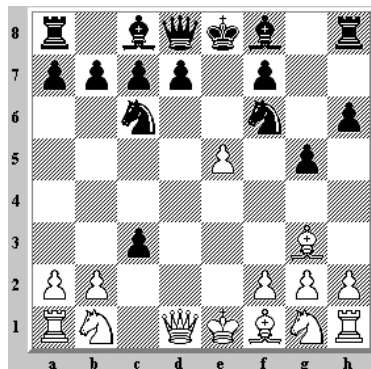


1.e4 e5 2.Nc3 Nf6 3.Bc4 Nxe4 4.Qh5
Nd6 5.Bb3 Nc6 6.d4 exd4 7.Nd5

Black to move. Which is better?

- 7...Be7
- 7...g6

No. 31

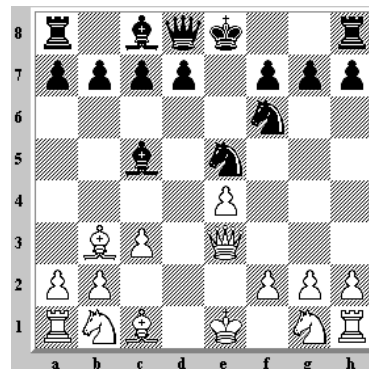


1.e4 e5 2.c3 Nc6 3.d4 Nf6 4.Bg5 h6
5.Bh4 g5 6.Bg3 exd4 7.e5 dxc3

White to move. Which is better?

- 8.Nxc3
- 8.exf6

No. 32

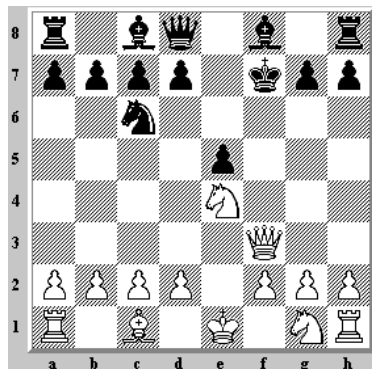


1.e4 e5 2.d4 exd4 3.Qxd4 Nc6 4.Qe3
Nf6 5.Bc4 Ne5 6.Bb3 Bb4+ 7.c3 Bc5

White to move. Which is better?

- 8.Qe2
- 8.Qg3

No. 33

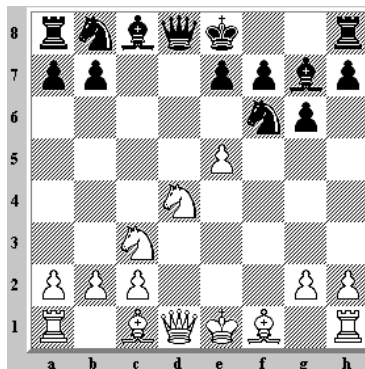


1.e4 e5 2.Bc4 Nf6 3.Nc3 Nxe4 4.Bxf7+ Kxf7 5.Nxe4 Nc6 6.Qf3+

Black to move. Which is better?

- 6...Ke8
- 6...Kg8

No. 34

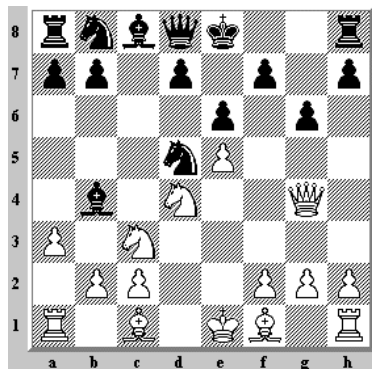


1.e4 c5 2.Nf3 d6 3.d4 cxd4 4.Nxd4 Nf6 5.Nc3 g6 6.f4 Bg7 (6...Nc6 is better) 7.e5 dxe5 8.fxe5

Black to move. Which is better?

- 8...Nd5
- 8...Nfd7

No. 35

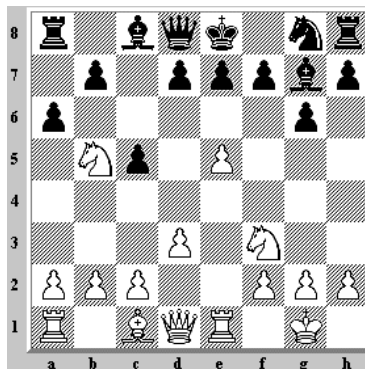


1.e4 c5 2.Nf3 e6 3.d4 cxd4 4.Nxd4 Nf6 5.Nc3 Bb4 6.e5 Nd5 7.Qg4 g6 (If 7...Nxc3, then 8.Qxg7 Rf8; 7...Kf8 may be best.) 8.a3 (8. Ndb5 is stronger).

Black to move. Which is better?

- 8...Qa5
- 8...h5

No. 36

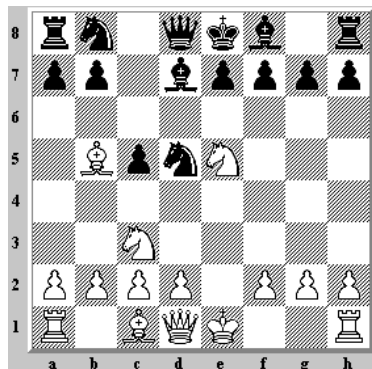


1.e4 c5 2.Nf3 Nc6 3.Bb5 g6 4.O-O Bg7 5.Re1 Nf6 6.Nc3 Nd4 (6...O-O is better) 7.e5 Ng8 8.d3 Nxb5 9.Nxb5 a6

White to move. Which is better?

- 10.Nc3
- 10.Nd6+

No. 37

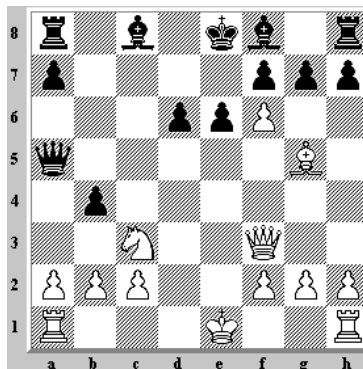


1.e4 c5 2.Nf3 Nf6 3.Nc3 d5 4.exd5 Nxd5
5.Bb5+ Bd7 6.Ne5

Black to move. Which is better?

- 6...Bxb5
- 6...Nxc3

No. 38

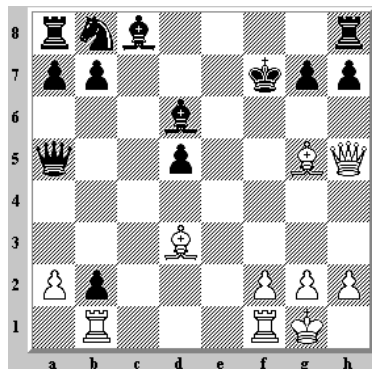


1.e4 c5 2.Nf3 Nc6 3.d4 cxd4 4.Nxd4 Nf6
5.Nc3 d6 6.Bg5 e6 7.Nxc6 bxc6 8.e5
Qa5 9.Bb5 cxb5 10.exf6 b4 11.Qf3

Black to move. Which is better?

- 11...Qe5+
- 11...bxc3

No. 39

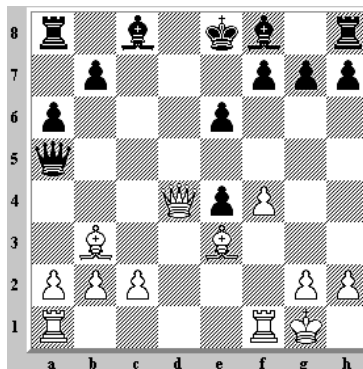


1.e4 c5 2.Nf3 Nf6 3.e5 Nd5 4.Nc3 e6
5.Nxd5 exd5 6.d4 d6 7.Bg5 Qa5+
8.c3 cxd4 9.Bd3 dxc3 10.O-O cxb2
11.Rb1 dxe5 12.Nxe5 Bd6 13.Nxf7 Kxf7
14.Qh5+

Black to move. Which is better?

- 14...Kf8
- 14...g6

No. 40

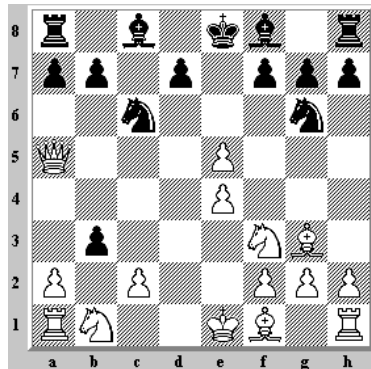


1.e4 c5 2.Nf3 d6 3.d4 cxd4 4.Nxd4 Nf6
5.Nc3 Nc6 6.Bc4 e6 7.Bb3 a6 8.f4 Qa5
9.O-O Nxd4 10.Qxd4 d5 11.Be3 Nxe4
12.Nxe4 dxe4

White to move. Which is better?

- 13.Qxe4
- 13.f5

No. 41

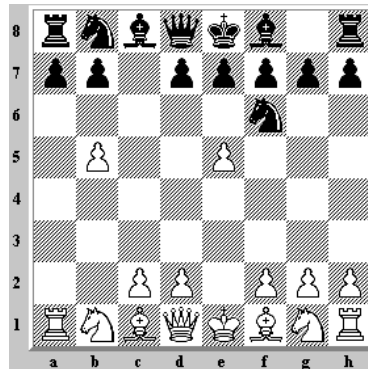


1.e4 c5 2.b4 cxb4 3.d4 e5 4.dxe5 Nc6
5.Nf3 Nge7 6.Bf4 Ng6 7.Bg3 Qa5 8.Qd5
b3+ 9.Qxa5

Black to move. Which is better?

- 9...Bb4+
- 9...b2

No. 42

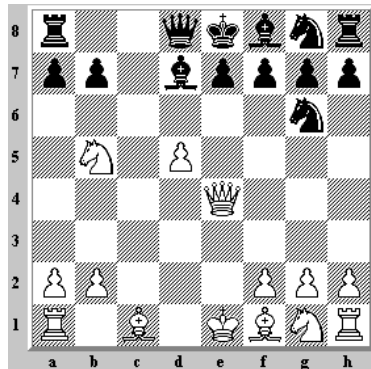


1.e4 c5 2.b4 cxb4 3.a3 Nc6 4.axb4 Nf6
5.b5 Nb8 6.e5

Black to move. Which is better?

- 6...Nd5
- 6...Qc7

No. 43

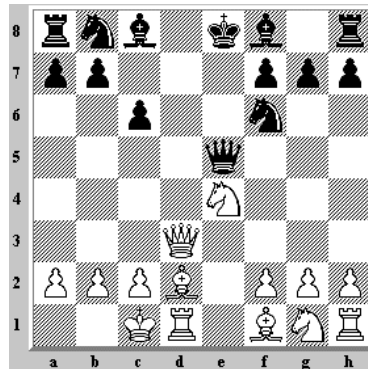


1.e4 c5 2.c3 Nc6 3.d4 cxd4 4.cxd4 d5
5.Nc3 dxe4 6.d5 Ne5 7.Qa4+ Bd7 8.
Qxe4 Ng6 9.Nb5

Black to move. Which is better?

- 9...Nf6
- 9...Qb8

No. 44

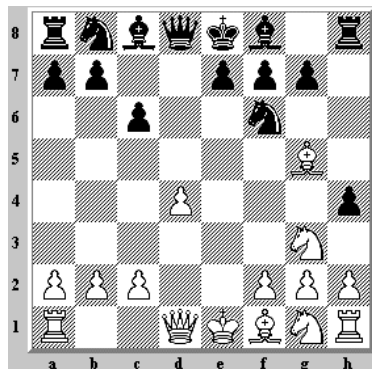


1.e4 c6 2.d4 d5 3.Nc3 dxe4 4.Nxe4
Nf6 5.Qd3 (5.Nxf6+ is usually played.)
5...e5 (5...Nxe4 6.Qxe4 is playable)
6.dxe5 Qa5+ 7.Bd2 Qxe5 8.O-O-O

Black to move. Which is better?

- 8...Be7
- 8...Nxe4

No. 45

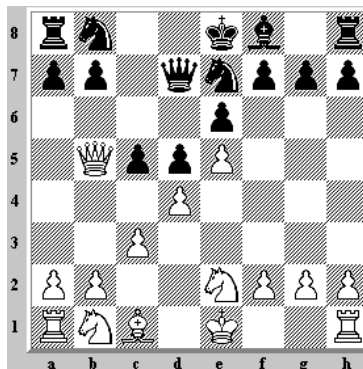


1.e4 c6 2.d4 d5 3.Nc3 dxe4 4.Nxe4 Nf6
5.Ng3 (5.Nxf6+ is good) 5...h5 6.Bg5
h4

White to move. Which is better?

- 7.Bxf6
- 7.N3e2

No. 46

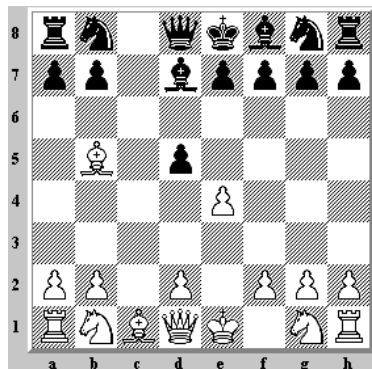


1.e4 c6 2.d4 d5 3.e5 Bf5 4.Bd3 Bxd3
5.Qxd3 e6 6.Ne2 c5 7.c3 Ne7 8.Qb5+
Qd7

White to move. Which is better?

- 9.Qxc5
- 9.Qxd7+

No. 47

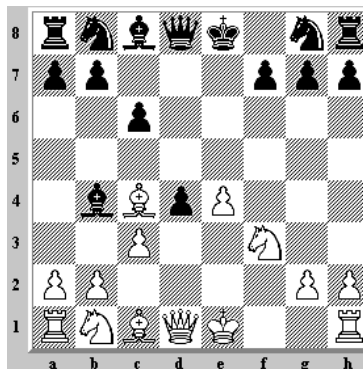


1.e4 c6 2.c4 d5 3.cxd5 cxd5 4.Bb5+
Bd7

White to move. Which is better?

- 5.Bxd7+
- 5.Qa4

No. 48

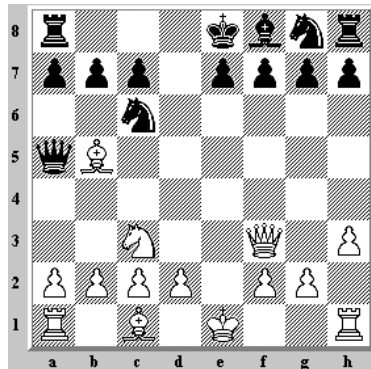


1.e4 c6 2.d4 d5 3.f3 dxe4 4.fxe4 e5 5.Nf3
exd4 6.Bc4 Bb4+ 7.c3

Black to move. Which is better?

- 7...Ba5
- 7...dxc3

No. 49

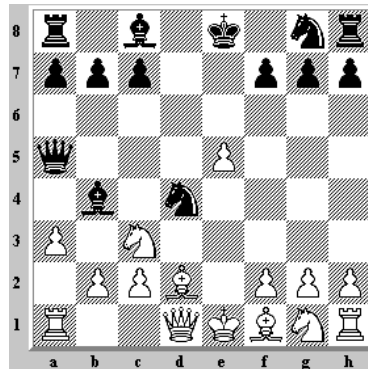


1.e4 d5 2.exd5 Qxd5 3.Nc3 Qa5 4.Nf3
(4.d4 is also good) 4...Bg4 5.h3 Bxf3
(5...Bh5 is better) 6.Qxf3 Nc6 7.Bb5

Black to move. Which is better?

- 7...Qb6
- 7...Rd8

No. 50

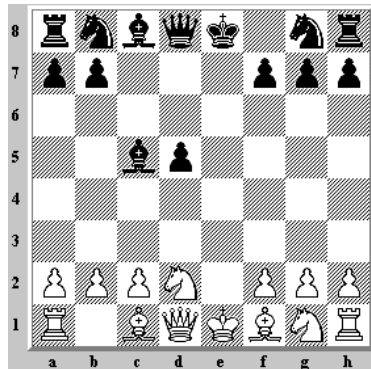


1.e4 d5 2.exd5 Qxd5 3.Nc3 Qa5 4.d4 e5
5.dxe5 Bb4 6.Bd2 Nc6 7.a3 Nd4

White to move. Which is better?

- 8.Nge2
- 8.axb4

No. 51

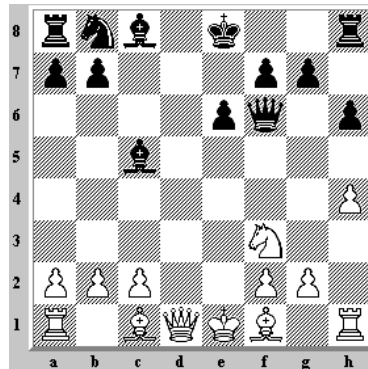


1.e4 e6 2.d4 d5 3.Nd2 c5 4.exd5 exd5
5.dxc5 (5.Bb5+ and 5.Ngf3 are the
normal continuations.) 5...Bxc5

White to move. Which is better?

- 6.Ne2
- 6.Ngf3

No. 52

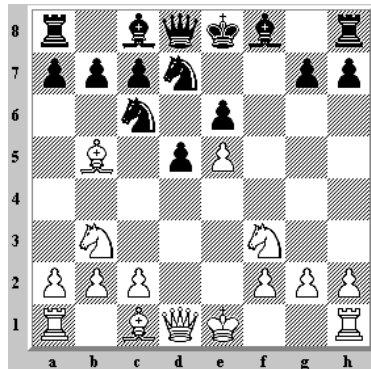


1.e4 e6 2.d4 d5 3.Nc3 dxe4 4.Nxe4 Nf6
5.Nxf6+ Qxf6 6.Nf3 h6 7.h4 c5 8.dxc5
Bxc5

White to move. Which is better?

- 9.Bg5
- 9.g4

No. 53

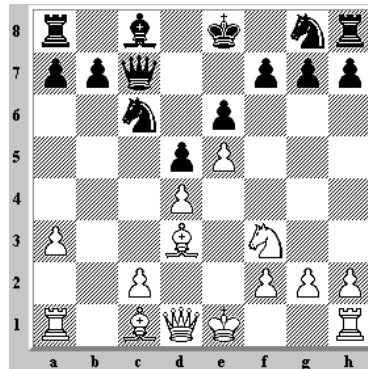


1.e4 e6 2.d4 d5 3.Nd2 Nc6 4.Ng3 Nf6
5.e5 Nd7 6.Nb3 f6 7.Bb5 fxe5 8.dxe5

Black to move. Which is better?

- 8...Be7
- 8...Nc5

No. 54

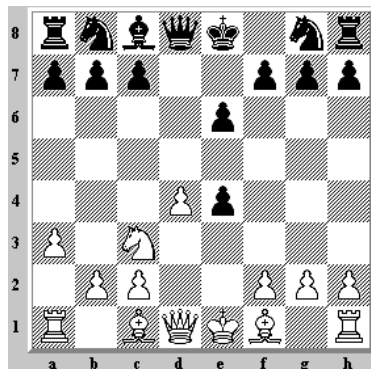


1.e4 e6 2.d4 d5 3.Nc3 Bb4 4.e5 c5 5.a3
Bxc3+ 6.bxc3 Qc7 7.Nf3 Nc6 8.Bd3
cxd4 9.cxd4

Black to move. Which is better?

- 9...Nge7
- 9...Nxd4

No. 55

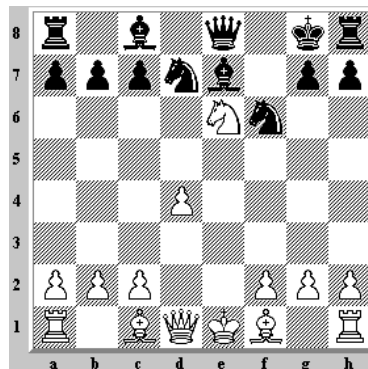


1.e4 e6 2.d4 d5 3.Nc3 Bb4 4.Nge2 dxe4
5.a3 Bxc3+ 6.Nxc3

Black to move. Which is better?

- 6...Nc6
- 6...f5

No. 56

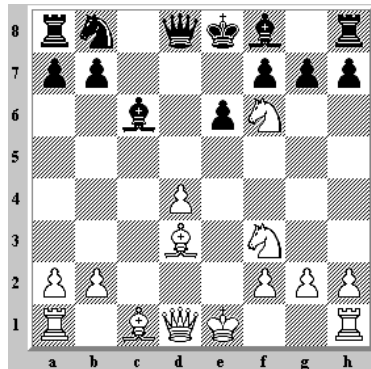


1.e4 e6 2.d4 d5 3.Nc3 dxe4 4.Nxe4 Nd7
5.Nf3 Ngf6 6.Nfg5 Be7 7.Nxf7 Kxf7
8.Ng5+ Kg8 9.Nxe6 Qe8 (9...Bb4+
10.c3 Qe7 is better).

White to move. Which is better?

- 10.Bc4
- 10.Nxc7

No. 57

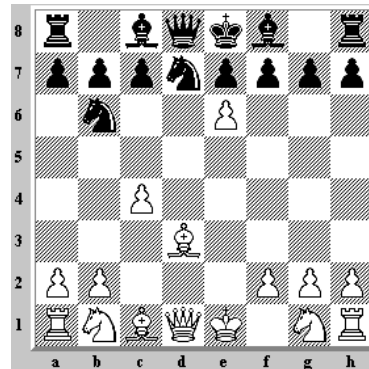


1.e4 e6 2.d4 d5 3.Nd2 c5 4.c3 cxd4
5.cxd4 dxe4 6.Nxe4 Bd7 7.Nf3 Bc6 8.
Bd3 Nf6 9.Nxf6+

Black to move. Which is better?

- 9...Qxf6
- 9...gxf6

No. 58

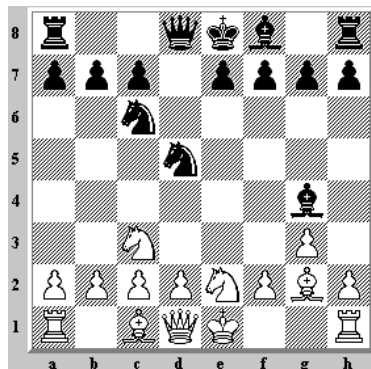


1.e4 Nf6 2.e5 Nd5 3.c4 Nb6 4.d4 d6
5.Bd3 dxe5 6.dxe5 N8d7 7.e6

Black to move. Which is better?

- 7...Ne5
- 7...Nf6

No. 59

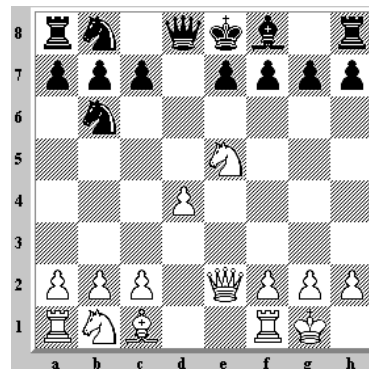


1.e4 Nf6 2.Nc3 d5 3.exd5 Nxd5 4.Nge2
Nc6 5.g3 Bg4 6.Bg2

Black to move. Which is better?

- 6...Nd4
- 6...Nxc3

No. 60

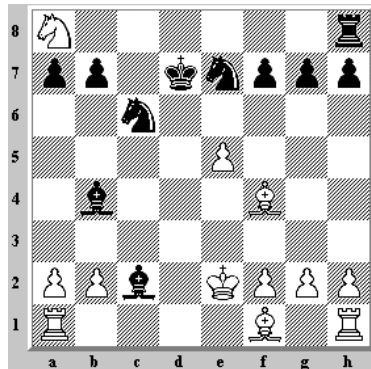


1.e4 Nf6 2.e5 Nd5 3.Nf3 d6 4.d4 Bg4
5.Be2 dxe5 6.Nxe5 Bxe2 7.Qxe2 Nb6 8.
O-O

Black to move. Which is better?

- 8...Qxd4
- 8...e6

No. 61

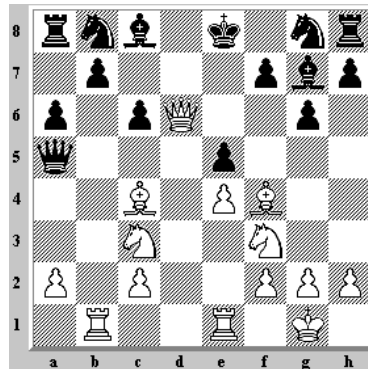


1.e4 Nc6 2.d4 d5 3.exd5 Qxd5 4.Nf3 Bg4 5.Nc3 (5.Be2 is better) 5...Bxf3 6.Nxd5 Bxd1 7.Nxc7+ Kd7 8.Nxa8 Bxc2 9.Bf4 e5 10.dxe5 Bb4+ 11. Ke2 (11.Bd2 is more natural) 11...Nge7

White to move. Which is better?

- 12.Be3
- 12.e6+

No. 62

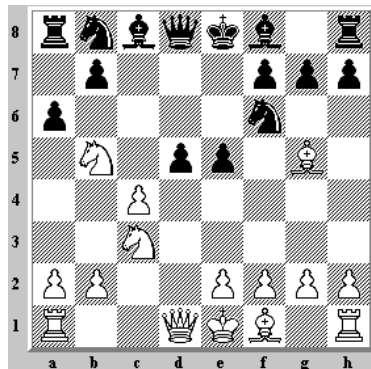


1.e4 g6 2.d4 Bg7 3.Nc3 d6 4.Nf3 c6 5.Bg5 Qb6 6.Qd2 Qxb2 7.Rb1 Qa3 8.Bc4 Qa5 9.O-O e6 10.Rfe1 a6 11.Bf4 e5 12.dxe5 dxe5 13.Qd6

Black to move. Which is better?

- 13...Qxc3
- 13...f6

No. 63

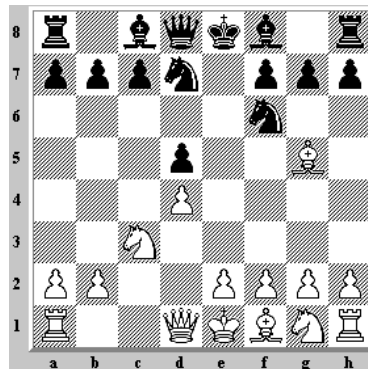


1.d4 d5 2.c4 e6 3.Nc3 Nf6 4.Nf3 c5 5.Bg5 cxd4 6.Nxd4 e5 7.Ndb5 (7.Nf3 is better) 7...a6

White to move. Which is better?

- 8.Nxd5
- 8.Qa4

No. 64

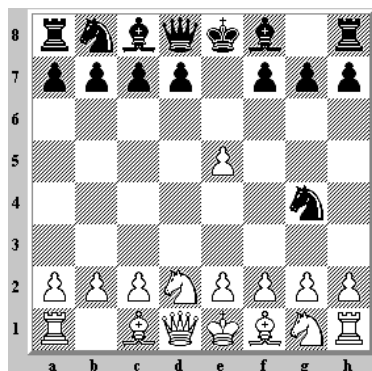


1.d4 d5 2.c4 e6 3.Nc3 Nf6 4.Bg5 Nbd7 5.cxd5 exd5

White to move. Which is better?

- 6.Nf3
- 6.Nxd5

No. 65

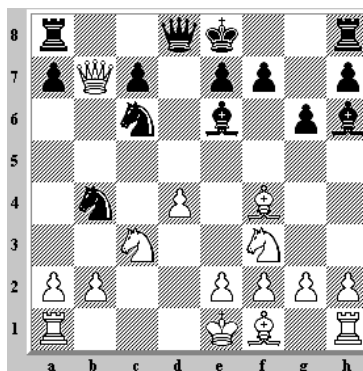


1.d4 Nf6 2.Nd2 e5 3.dxe5 Ng4

White to move. Which is better?

- 4.Ngf3
- 4.h3

No. 66

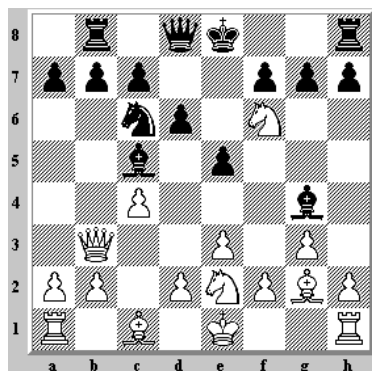


1.d4 Nf6 2.c4 g6 3.Nc3 d5 4.Qb3 dxc4
5.Qxc4 Be6 6.Qb5+ Nc6 7.Nf3 Nd5
8.Qxb7 Ndb4 9.Bf4 Bh6

White to move. Which is better?

- 10.Bxc7
- 10.Bxh6

No. 67

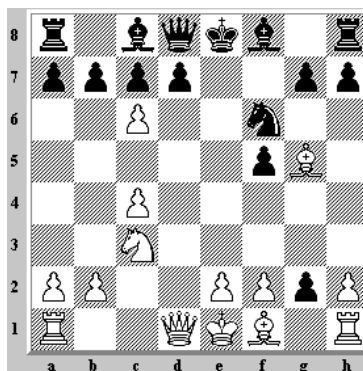


1.c4 e5 2.Nc3 Nc6 3.g3 Nf6 4.Bg2 Bb4
5.e3 d6 6.Nge2 Bg4 7.Qb3 Rb8 8.Nd5
Bc5 9.Nxf6+

Black to move. Which is better?

- 9...Qxf6
- 9...gxf6

No. 68

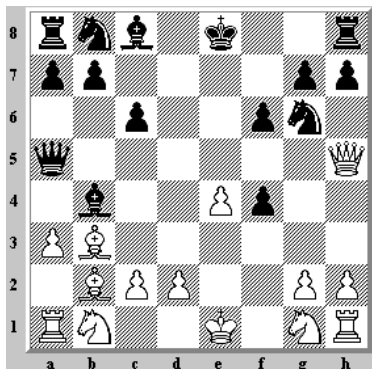


1.c4 e5 2.Nc3 Nc6 3.Nf3 f5 4.d4 e4
5.Bg5 Nf6 6.d5 exf3 7.dxc6 fxe2

White to move. Which is better?

- 8.Bxe2
- 8.cxd7+

No. 69

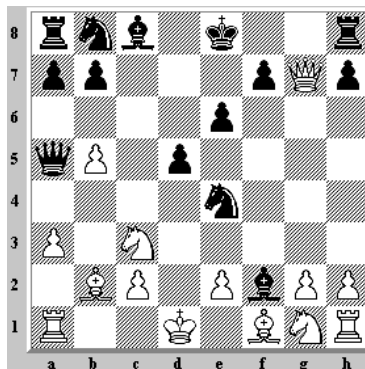


1.b4 e5 2.Bb2 f6 3.e4 Bxb4 4.Bc4 Ne7
5.Qh5+ Ng6 6.f4 exf4 7.a3 d5 8.Bxd5
c6 9.Bb3 Qa5

White to move. Which is better?

- 10.axb4
- 10.e5

No. 70



1.b4 e6 2.Bb2 Nf6 3.a3 c5 4.b5 d5 5.d4
Qa5+ 6.Nc3 Ne4 7.Qd3 cxd4 8.Qxd4
Bc5 9.Qxg7 Bxf2+ 10.Kd1

Black to move. Which is better?

- 10...Rf8
- 10...d4

No. 1

White can't recapture with **8.Qxd4**, because of 8...c5 9.Qd5 Be6 10.Qc6+ Bd7 11.Qd5 c4. [This sequence, known as the *Noah's Ark Trap* may have claimed more victims than any other trap in chess. Alekhine once recommended 8.Qxd4 in a tournament book, and suggested that 11...Be6 was a draw by repetition!] **8.Bd5** and 8.a4 are good for White.

No. 2

If **11.Qxh5** then 11...Bg4 traps the Queen.
11.d4 Bg4 12.f3 Bh4+ 13.Ke2 is better but Black still has a strong attack.

No. 3

If **12...Bxf2+** then 13.Rxf2 Rf8 with a tough fight to come.
12...Qg5 wins because 13.Qxh8+ Ke7 14.Qxh7 Bxf2+

No. 4

11...b6 loses to 12.e6 Qf6 13.Bxd7+ Kd8 14.Bc6+ Qxd4 15.e7 mate
11...Qg5 keeps Black in the fight.

No. 5

11...Qd7 is a blunder which leaves the Ne4 hanging. 12.Nxe6 Qxe6 13.Rxe4
After **11...Nxe5** 12.f3 Bd6 13.fxe4 Bg4 14.Qc2 c5 Black has a good game.

No. 6

7...O-O loses to 8.Bxc6 Bxc6 9.dxe5 dxe5 10.Qxd8 Raxd8 11.Nxe5 Bxe4 12.Nxe4
Nxe4 13.Nd3 f5 14. f3 Bc5+ 15.Nxc5 Nxc5 16.Bg5 Rd5 17.Be7; 10...Rfxd8
11.Nxe5 Bxe4 12.Nxe4 Nxe4 13.Nd3 f5 14.f3 Bc5+ 15.Kf1 is no better.
7...exd4 is necessary before castling, e.g. 8.Nxd4 O-O.

No. 7

10.fxg4 loses to 10...Bc5+ 11.Kh1 Ng3+ 12.hxg3 Qg5 13.Rf5 h5! and mates.
10.Qe1 holds the position and should win.

No. 8

9...Ke7 10.Qh5 Qe8 11.Qg5+ hxg5 12.Bxg5 mate
9...Ke8 is the only move to survive, e.g. 10. Qh5 Qf6 11.f4.

No. 9

5...Nxe4 fails to 6.d5 a6 7.Bd3 Nf6 8.dxc6 e4 9.Re1 d5 10.Be2 exf3 11.cxb7
Bxb7 12.Bb5 mate
5...Bd7 leads to well known lines.

No. 10

5.Nxe5 (Black's last move set a trap and White falls into it with this move.)
5...c6 6.Nc4 Ng6 7.Ba4 b5
After **5.O-O** Black has to justify the last move.

No. 11

4.Nxe5 lets Black whip up an attack with 4...Qg5 5.Nxf7 (5.Bxf7+ Ke7) 5...Qxg2
6.Rf1 Qxe4+ 7.Be2 Nf3 mate
If **4.Nxd4** exd4 5. c3, White is better.

No. 12

14...Kd8 loses immediately to 15.Bg5 Nde8 16.Rxe8+

14...Kf8 holds out longer, but still loses after 15.Bh6+ Kg8 16.Re5 Nfe4 17.Re1 f5 18.Re7 and, for example, 18...b6 19.Ne5 Bb7 20.f3 Nc5 21.Rg7+ Kf8 22.Rxh7+ Kg8 23. Rg7+ Kf8 24.Ng6 mate

No. 13

9...Bxc3 is bad, but the variations are complicated. 10.Ba3 d5 11.Bb5 Bxa1 12.Re1+ Be6 13.Qa4 Rb8 14.Ne5 Qf6 15.Qxa7 Rc8 16.Qxb7 Bxd4 17.Ng4. White can go wrong with 10.Qb3, but Black must avoid 10...Bxa1 (Better is 10...d5 11.Bxd5 O-O 12.Bxf7+ Rxf7 13.Ng5 Be6 14.Qxe6 Qd7 15.Rb1 Qxe6 16.Nxe6 Nxd4) 11.Bxf7+ Kf8 12.Bg5 Ne7 13.Ne5 Bxd4 14.Bg6 d5 15.Qf3+ Bf5 16.Bxf5 Bxe5 17.Be6+ Bf6 18.Bxf6

9...d5 stops White's attack cold.

No. 14

14...Qxf6 15.Rxe6 wins

Better is **14...Qg6** 15.fxg7 (15.Rxe6 gxf6) 15...Qxg7 16.Nxe6 Qd7 and Black still has a game to play.

No. 15

11...Nd4 12.Nxd7+ Nxe2 13.Nf6 mate

11...Ne7 avoids mate.

No. 16

6...Qh5 loses to 7.Be2 Qg6 8.Nh4

6...Qg4 avoids the Queen trap.

No. 17

6...Qf6 loses to 7.Nb5 Kd8 8.Qc5

6...d6 is better, e.g. 7.f4 (7.Bf4 f6) 7...Qh4+

No. 18

7...Bxc3+ is bad because it opens the short diagonal for the Bishop on c1 : 8.bxc3 Nh6 9.Qh5+ Kf8 10.Ba3+ Kg8 11.Qf7+ Nxf7 12.exf7 mate

Better is **7...Nh6** 8.Qh5+ Kf8 although Black is still in trouble.

No. 19

6...Be7 allows 7.Bxf7+ Nxf7 8.Ne6 Qb6 9.a5 Qb4+ 10.c3 Qc4 11.Nc7+ Kd8 12.b3

6...exd4 is one of many continuations at Black's disposal.

No. 20

7...Nc6 allows a forced mate with 8.Bf7+ Ke7 9.Qxf6+ Kxf6 10.Nd5+ Ke5 11.Nf3+ Kxe4 12.Nc3 mate

7...Qe7 holds.

No. 21

12...Kf8 loses to 13.Qh5 Qe8 14.Rxf6+ and mates.

Black holds with **12...Be6** 13.Qh5+ Ng6 14.Bxe6+ Kxe6 15.dxc7 Qd5+ 16.Qxd5+ Kxd5

No. 22

6...Bxf3 7.Nf6 mate

6...Qe7 and if 7.Qb5+ then 7...Nd7 is strong. If 6...Be7 White continues 7.Qb5+.

No. 23

8.Bxa8 looks bad because of **8...Bg4**, but White gets compensation for the Queen with **9.Qxg4 Nxg4 10.Bc6+ Ke7**

8.Bxd7+ Qxd7 9.Qe2 and White has an extra Pawn.

No. 24

4...f6 not only looks bad, but is bad because of **5.Nxg5 fxe5 6.Qh5+ Ke7 7.Qf7+ Kd6 8.Qd5+ Ke7 9.Qe5** mate

4...Bg7 is thought by the experts to be best in this position.

No. 25

9.Nxg4 Ng3 10.Rh2 Qe7+ 11. Kf2 h5 traps the Knight.

9.O-O is 'book'.

No. 26

7.Nxe5 loses to **7...Nxe4 8.Nf3 Qh4+** (Anyway!) **9.Nxh4 Bf2+ 10.Ke2 Nd4+ 11.Kd3 Nc5** mate

7.Bd3, blocking the d-Pawn, is not pretty, but White is still in the game.

No. 27

12.Nxd5 wins after **12...cxd5 13.Rxd5 Qe6 14.Bc4 Qe4 (14...Ncd7 15.Rd4) 15.Bxc5 Qxf3**, when **16.Re1+** mates

After **12.Bb5** Ne6 Black is still in the game.

No. 28

Not **8...Be6 9.Bxe6 Nxc2+ 10.Kd1** and White is out of immediate trouble.

8...Bf5 works because of **9.c3 g5 10.Bxf7+ Kxf7 11.Qf2 e3 12.Qf1 exd2+ 13.Kd1 dxc1=Q+ 14.Kxc1 g4**

No. 29

Black's game is not good, but **10...Na5** loses immediately; **11.Rf1 Nxc4 12.Qd7 f6 13.Nxf6** wins.

10...Qf2, preventing Rf1, is the best try.

No. 30

7...g6 loses to **8.Qe2+ Be7 9.Nf6+ Kf8 10.Bh6** mate

7...Be7 holds.

No. 31

8.exf6 loses to **8...cxb2 9.Qe2+ Qe7! 10.fxe7 Bg7**

8.Nxc3 is the only move which avoids immediate loss.

No. 32

8.Qg3 loses to **8...Bxf2+** when the King and Queen get forked after either capture.

8.Qe2 holds.

No. 33

6...Kg8 loses immediately to **7.Ng5**.

After **6...Ke8** Black threatens to continue with **...d5**.

No. 34

8...Nd5 is bad because of **9.Bb5+ Kf8 10.O-O** and Black is in trouble. If

10...Bxe5, then 11.Bh6+ Kg8 12.Nxd5 Qxd5 (12...e6 is the best chance, but loses to 13.Nf3) 13.Nf5 Qc5+ 14.Be3 Qc7
8...Nfd7 is better, e.g. 9.e6 Ne5

No. 35

8...Qa5 loses after 9.axb4 Qxa1 10.Nb3 and the Queen is trapped.
8...h5 is better.

No. 36

10.Nc3 is safe, but nothing more.
10.Nd6+ is very strong. 10...exd6 11.Bg5 Qa5 12.exd6+ Kf8 13.Re8+ Kxe8 14.Qe2+ Kf8 15. Be7+ Ke8 16.Bd8+ Kxd8 17.Ng5 mates

No. 37

6...Nxc3 loses to 7.Qf3 f6 8.Qh5+ g6 9.Nxg6 Kf7 10.Ne5+
After **6...Bxb5** 7.Qh5 g6 8.Qf3 f6 White's attack ends.

No. 38

11...bxc3 loses to 12.Qc6+
11...Qe5+ followed by ...Rb8 or ...d5 holds Black's position together.

No. 39

14...g6 loses to 15.Bxg6+ hxg6 16.Qxh8 Bf5 17.Rfe1 Be4 18.Rxe4 dxe4 19.Qf6+
14...Kf8 keeps Black in the game. Does White's attack justify the sacrificed material?

No. 40

13.Qxe4 is good, but not as strong as 13.f5..
13.f5 practically wins by force. 13...Qb4 14.fxe6 Bxe6 15.Bxe6 fxe6 16.Rxf8+ Qxf8 17.Qa4+ b5 18.Qxe4

No. 41

Not **9...Bb4+** 10.Qxb4 Nxb4 11.Na3 when Black is lost.
9...b2 works because of 10.Qc3 Bb4 11.Qxb4 (11.Nbd2 is better but Black has an advantage.) 11...Nxb4

No. 42

6...Qc7 7.d4 and if 7...Nd5 then 8.c4 Nb6 (8...Nc7 is not possible in this variation.) 9.c5 Nd5 10.b6
6...Nd5 7.c4 Nc7

No. 43

9...Nf6 10.Nd6 mate
9...Qb8 and if 10.d6 Nf6 holds for Black.

No. 44

Bad is **8...Nxe4** 9.Qd8+! Kxd8 10.Bg5+. Also bad is 8...Qxe4 9.Re1.
8...Be7 avoids immediate loss.

No. 45

7.Bxf6 is bad because of 7...hxg3 8.Be5 Rxh2! 9.Rxh2 Qa5+ 10.c3 Qxe5+!
11.dxe5 gxh2
7.N3e2 avoids immediate disaster.

No. 46

9.Qxc5 Nf5 10.Qa5 b6 traps the Queen.

9.Qxd7+ Nxd7 is unexciting but safe.

No. 47

5.Qa4 gets White into trouble after 5...dxe4 6.Bxd7+ Nxd7 7.Qxe4 Nc5 8.Qc4 Nd3+ 9.Ke2 Rc8 10.Qxd3 Qxd3+ 11.Kxd3 Rxc1 12.Ke2 g6

5.Bxd7+ Qxd7 and White can choose between 6.exd5 and 6.e5

No. 48

7...dxc3 loses to 8. Bxf7+ Kxf7 9.Qxd8 when 9...cxb2+ is insufficient because of 10.Ke2 bxa1=Q 11.Ng5+ Kg6 12.Qe8+ Kh6 13.Ne6+ g5 14.Bxg5 mate

7...Ba5 guards the Qd8, making ...dxc3 a threat.

No. 49

7...Qb6 loses to 8.Nd5 Qa5 9.b4

7...Rd8 8.Bxc6+ bxc6 9.Qxc6+ Rd7 avoids immediate disaster, but Black is losing.

No. 50

8.axb4 loses to 8...Qxa1 9.Qxa1 Nxc2+

Better is **8.Nge2** when Black has trouble recapturing the Pawn, 8...Bg4 9.f3 for example.

No. 51

6.Ne2 loses to 6...Qb6

6.Ngf3 avoids the trouble on the a7-g1 diagonal.

No. 52

9.g4 is too slow; after 9...Qe7 Black is out of trouble.

9.Bg5 wins material after 9...hxg5 10.hxg5 Bb4+ 11.Ke2 Qxf3+ 12.Kxf3 Rxh1 13.Bb5+

No. 53

8...Nc5 loses to 9.Ng5 Bd7 10.Bxc6 bxc6 11.Qh5+ g6 12.Qf3

8...Be7 9.Bxc6 bxc6 10.Nbd4 Nb8 holds the position.

No. 54

9...Nxd4 loses to 10.Nxd4 Qc3+ 11.Qd2 Qxa1 12.c3 and 13.Nb3

9...Nge7 develops the Knight to a natural square.

No. 55

If **6...f5**, White gets a great game with 7.f3 exf3 8.Qxf3 Qxd4 9.Qg3 Nf6 10.Qxg7 Qe5+ 11.Be2 Rg8 12.Qh6 Rg6 13.Qh4 Bd7 14.Bg5 Bc6 15.O-O-O Bxg2 16.Rhe1 Be4 17.Bh5 Nxh5 18.Rd8+ Kf7 19.Qxh5

6...Nc6 is more solid.

No. 56

10.Nxc7 Bb4 mate

After **10.Bc4** White has powerful threats.

No. 57

9...Qxf6 is bad because after 10.Bg5 Bxf3 White is not forced to recapture, but plays instead 11.Qc1 winning the Queen.

9...gxf6 is the only recapture.

No. 58

7...Nf6 8.exf7+ Kxf7 9.Bg6+ uncovers an attack on the Black Queen.

7...Ne5 is forced; if 8.exf7+ Nxf7

No. 59

6...Nd4 is very strong. The Knight on d5 is protected by 7.Bxd5 Qxd5! 8.f3 Qxf3 9.Rf1 Qg2.

6...Nxc3 7.bxc3 lets White escape disaster.

No. 60

8...Qxd4 9.Rd1 Qh4 10.Bg5 Qxg5 11.Rd8+ is followed by a family fork on f7. Note that 8...e6 loses to 9.Qf3.

8...N8d7 threatens to exchange the powerful White Knight on e5.

No. 61

12.e6+, trying to extricate the Knight, loses to 12...fxe6 13.Nc7 Nd4+ 14.Ke3 Nef5 mate

After **12.Be3** Rxa8 White is still in the game.

No. 62

13...Qxc3 loses to 14.Red1 Nd7 15.Bxf7+ and mates.

13...f6 holds for the moment.

No. 63

8.Nxd5 is bad because of 8...axb5 9.Nxf6+ Qxf6! (White was counting on 9...gxf6? 10.Qxd8+ Kxd8 11.Bxf6+) 10.Bxf6 Bb4+

Better is **8.Qa4** but after 8...Bd7 9.cxd5 Qb6 Black has a good game.

No. 64

6.Nxd5 loses a piece to 6...Nxd5 7.Bxd8 Bb4+ 8.Qd2 Bxd2+ 9.Kxd2 Kxd8. This trap arises frequently.

6.Nf3 is unambitious but perfectly good.

No. 65

4.h3 is a blunder because of 4...Ne3.

4.Ngf3 is good enough.

No. 66

10.Bxc7 Nxd4 11.Bxd8 Ndc2+ 12.Kd1 Rxd8+ 13.Nd5 Bxd5 and Black wins easily.

10.Bxh6 Rb8 11.Qxb8 Nxb8 is the lesser of evils.

No. 67

After **9...gxf6** White is better.

9...Qxf6 is good because White can't play 10.Bxc6+ bxc6 11.Qxb8+ Kd7 12.Qxh8 Qf3 13.Kd1 Qxe2+ and Black mates.

No. 68

8.cxd7+ Nxd7 9.Bxd8 gxh1=Q and Black has won material

8.Bxg2 bxc6 is better.

No. 69

Of course not **10.axb4** which loses to 10...Qxh5.

10.e5 is strong because 10...Be7 loses to 11.Bf7+; 10...Bc5 is better.

No. 70

10...Rf8 is not bad, just unambitious.

10...d4 11.Qxh8+ (Better is 11.Nf3 Nxc3+ 12.Bxc3 Qxc3, but after 13.Qxh8+ Ke7 14.Rb1 Nd7 White has problems with the dark squares.) 11...Ke7 12.Qxc8 dxc3 13. Bc1 Nd7 14.Qxa8 Qxb5